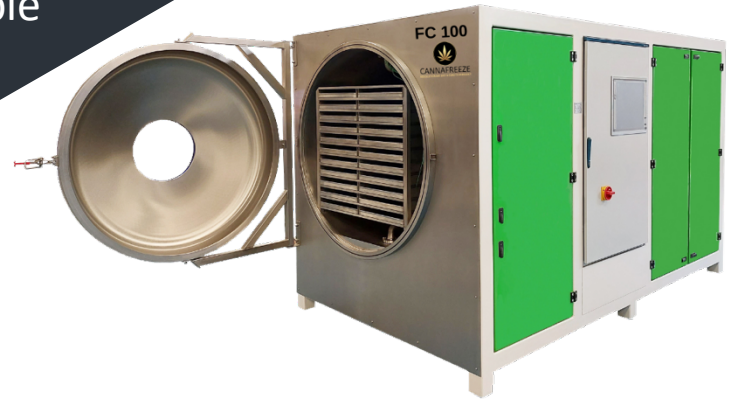




CANNAFREEZE

"Enhancing Product Quality & Profits"

CANNABIS FREEZE DRYER
"Stainless Programmable"



2026
STANDARD

MODEL
FC 100 +
30 KW CHILLER

PRICED AT \$299,125

(APPROXIMATELY 160 LBS/24 - 36 HOURS)

This is the newest concept in a programmable, food grade freeze dryer built to exacting specifications for the cannabis and hemp industries.

The FC 100 freeze dryer is a short cycle, high performance unit featuring stainless steel shelves conducting heat directly to the product. Freeze drying conduction does not require high shelf temperatures and is instrumental in retaining cannabinoids.

TECHNICAL DATA

FC 100

Some of the key features of this unit are:

- Fast drying capabilities of 24 – 36 hours for approximately 160 lbs. depending on product type
- Fully programmable automatic cycle with 19 Inch touch screen HMI
- Remote access via internet and direct factory support
- Shelf area of 112 Sq Feet and a shelf spacing of 2.36 Inches
- Fast initial product freezing via conduction
- The refrigeration system is water cooled, and a 30 kw chiller is supplied with the freeze dryer.

Built to exacting specifications at our ISO:9001 Factory.

Onsite commissioning will be completed by a CannaFREEZE team member.

ICE CONDENSER CAPACITY:	330 lbs
ICE CONDENSER PERFORMANCE:	286 lbs/24 Hrs
ICE CONDENSER TEMPERATURE:	-103°F
DEFROST:	Hot Gas
SHELF DIMENSIONS:	39 x 31.5 Inches
NUMBER OF SHELVES:	13 + 1 (26 Trays)
SHELF AREA:	112 Sq Feet
SHELF SPACING:	2.36 Inches
SHELF TEMPERATURE:	-85°F to +194°F
COOLING SYSTEMS:	Water Cooled
REFRIGERATION:	Two Stage
UNIT DIMENSIONS:	79 x 71 x 126 In H x W x L
REFRIGERANT:	R-404A (NON-CFC)
VACUUM:	Pfeiffer Duo 65
ELECTRICAL SPECS:	460/480 Volt 50/60 Cycle 3 Phase + Ground
AMPERAGE:	75 Amp
WEIGHT:	5,512 lbs
FREIGHT:	Ocean/20 Ft. Container



CANNAFREEZE
Young, Arizona USA 85554



PHONE: 623-826-5918
WEBSITE: www.cannafreeze.net
EMAIL: rldelong@cannafreeze.net (1/1/26)



CANNAFREEZE

"Enhancing Product Quality & Profits"

CANNABIS FREEZE DRYER

"Stainless Programmable"

2026
STANDARD

MODEL FC 100 - 30 KW CHILLER



GENERAL DATA

30 KW CHILLER	
COOLING CIRCUITS	1
COMPRESSORS	1 – Scroll
CAPACITY CONTROL	0-100%
POWER	460/3/60
FANS	2 – Axial
CONDENSER AIR FLOW	9,944 cfm
POWER (EACH)	1.03 kW
AVAILABLE STATIC PRESSURE	0 "wc
TANK VOLUME	67 gal
LENGTH	73.4 in
WIDTH	30 in
HEIGHT	57 in
WEIGHT	1,311 lb
AMPERAGE	26 A
MAX. ABSORBED POWER	18 kW

PERFORMANCE

30 KW CHILLER	
REFRIGERANT	R410A
HYDRAULIC KIT	P3
INLET WATER TEMPERATURE	69°F
OUTLET WATER TEMPERATURE	59°F
GLYCOL TYPE	25% Propylene Glycol
AMBIENT TEMPERATURE	95°F
COOLING CAPACITY	9.93 Tons 119,160 Btu/Hr
TOTAL ABSORBED POWER	12.2 kW
EVAPORATOR WATER FLOW RATE	24.7 gpm
AVAILABLE HEAD PRESSURE	37 psi
MAX AMBIENT TEMPERATURE	108°F



CANNAFREEZE
Young, Arizona USA 85554



PHONE: 623-826-5918
WEBSITE: www.cannafreeze.net
EMAIL: rldejong@cannafreeze.net (1/1/26)