

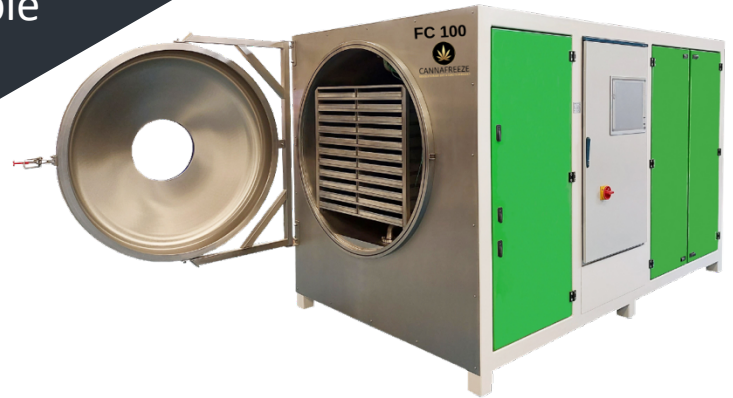


# CANNAFREEZE

*"Enhancing Product Quality & Profits"*

## CANNABIS FREEZE DRYER

*"Stainless Programmable"*



**2024**  
STANDARD

### MODEL FC 100 + 30 KW CHILLER

**PRICED AT \$299,125**

(APPROXIMATELY 160 LBS/24 - 36 HOURS)

**This is the newest concept in a programmable, food grade freeze dryer built to exacting specifications for the cannabis and hemp industries.**

**The FC 100 freeze dryer is a short cycle, high performance unit featuring stainless steel shelves conducting heat directly to the product. Freeze drying conduction does not require high shelf temperatures and is instrumental in retaining cannabinoids.**

### TECHNICAL DATA

### FC 100

#### Some of the key features of this unit are:

- Fast drying capabilities of 24 – 36 hours for approximately 160 lbs. depending on product type
- Fully programmable automatic cycle with 19 Inch touch screen HMI
- Remote access via internet and direct factory support
- Shelf area of 112 Sq Feet and a shelf spacing of 2.36 Inches
- Fast initial product freezing via conduction
- The refrigeration system is water cooled, and a 30 kw chiller is supplied with the freeze dryer.

**Built to exacting specifications at our ISO:9001 Factory.**

**Onsite commissioning will be completed by a CannaFREEZE team member.**

<b>ICE CONDENSER CAPACITY:</b>	330 lbs
<b>ICE CONDENSER PERFORMANCE:</b>	286 lbs/24 Hrs
<b>ICE CONDENSER TEMPERATURE:</b>	-103°F
<b>DEFROST:</b>	Hot Gas
<b>SHELF DIMENSIONS:</b>	39 x 31.5 Inches
<b>NUMBER OF SHELVES:</b>	13 + 1 (26 Trays)
<b>SHELF AREA:</b>	112 Sq Feet
<b>SHELF SPACING:</b>	2.36 Inches
<b>SHELF TEMPERATURE:</b>	-85°F to +194°F
<b>COOLING SYSTEMS:</b>	Water Cooled
<b>REFRIGERATION:</b>	Two Stage
<b>UNIT DIMENSIONS:</b>	79 x 71 x 126 In H x W x L
<b>REFRIGERANT:</b>	R-404A (NON-CFC)
<b>VACUUM:</b>	Pfeiffer Duo 65
<b>ELECTRICAL SPECS:</b>	460/480 Volt 50/60 Cycle 3 Phase + Ground
<b>AMPERAGE:</b>	75 Amp
<b>WEIGHT:</b>	5,512 lbs
<b>FREIGHT:</b>	Ocean/20 Ft. Container



CANNAFREEZE  
20820 N. 25<sup>TH</sup> Place, Suite 106  
Phoenix, Arizona USA 85050



PHONE: 623-977-8900  
WEBSITE: [www.cannafreeze.net](http://www.cannafreeze.net)  
EMAIL: [rldelong@cannafreeze.net](mailto:rldelong@cannafreeze.net) (1/24)



# CANNAFREEZE

*"Enhancing Product Quality & Profits"*

CANNABIS FREEZE DRYER  
"Stainless Programmable"

2024  
STANDARD

## MODEL FC 100 - 30 KW CHILLER



### GENERAL DATA

30 KW CHILLER	
COOLING CIRCUITS	1
COMPRESSORS	1 – Scroll
CAPACITY CONTROL	0-100%
POWER	460/3/60
FANS	2 – Axial
CONDENSER AIR FLOW	9,944 cfm
POWER (EACH)	1.03 kW
AVAILABLE STATIC PRESSURE	0 "wc
TANK VOLUME	67 gal
LENGTH	73.4 in
WIDTH	30 in
HEIGHT	57 in
WEIGHT	1,311 lb
AMPERAGE	26 A
MAX. ABSORBED POWER	18 kW

### PERFORMANCE

30 KW CHILLER	
REFRIGERANT	R410A
HYDRAULIC KIT	P3
INLET WATER TEMPERATURE	69°F
OUTLET WATER TEMPERATURE	59°F
GLYCOL TYPE	25% Propylene Glycol
AMBIENT TEMPERATURE	95°F
COOLING CAPACITY	9.93 Tons 119,160 Btu/Hr
TOTAL ABSORBED POWER	12.2 kW
EVAPORATOR WATER FLOW RATE	24.7 gpm
AVAILABLE HEAD PRESSURE	37 psi
MAX AMBIENT TEMPERATURE	108°F



CANNAFREEZE  
20820 N. 25<sup>TH</sup> Place, Suite 106  
Phoenix, Arizona USA 85050



PHONE: 623-977-8900  
WEBSITE: [www.cannafreeze.net](http://www.cannafreeze.net)  
EMAIL: [rldelong@cannafreeze.net](mailto:rldelong@cannafreeze.net) (1/1/24)